

# IUSB-9041-WG

## ➤ Industrial USB over IP IEEE 802.11 b/g wireless server with 4xUSB 2.0 host and 1x10/100Base-T(X)

### Features

- High Speed Air Connectivity : WLAN interface support up to 54Mbps link speed
- Highly Security Capability : WEP/WPA/WPA2/TKIP supported
- Network-enabled USB hub supports USB 1.0/1.1/2.0
- Access and monitor USB peripheral devices over TCP/IP network
- Works with existing POS or other application software
- Powerful Windows utility USB-Tool
- Virtual USB driver support
- Multiple units supported
- Static/DHCP IP address per unit
- Rigid IP-30 housing design
- DIN-Rail and wall mounting enabled



### Introduction

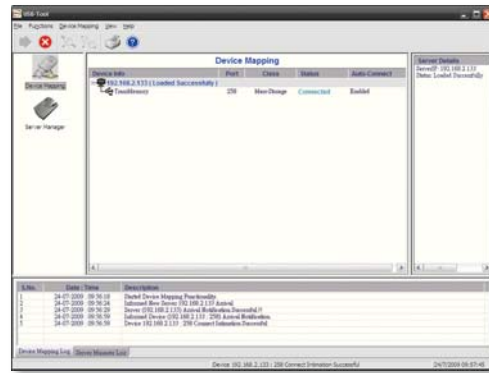
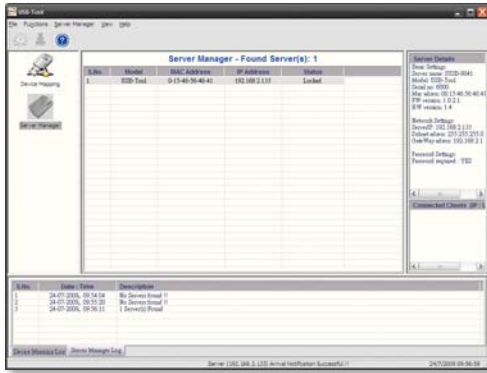
IUSB-9041-WG is a network-enabled USB hub. It is a powerful remote networking solution to utilize, making it easy to connect USB devices anywhere through the wireless network, while eliminating the need for locally-attached host PCs. IUSB-9041-WG provides four USB 2.0 ports, which deliver the same Plug and Play experience as onboard USB ports. Software drivers are loaded onto a host PC or server, enabling remote devices to communicate with the host PC, without changing existing application software. Peripheral devices can be centrally managed and monitored from a remote server or PC via an IP address. IUSB-9041-WG is also compatible with Bulk or Interrupt type USB devices such as bar-code scanners, printers, fingerprint scanners, mice, pole displays, card readers, USB flash drives, web camera, and more. In addition, bundled powerful Windows utility – USB-Tool can be used to discovery, mapping USB-Over-IP Servers in the LAN and WLAN.

### USB-Tool

In practical operation of IUSB-9041-WG, users can access USB devices through the TCP/IP network remotely without the connecting USB device locally. For logistic application, zero clients can avoid the central control PC been damaged and reduce total investment. Windows utility (USB-Tool) is supported for configuration and management remotely. This utility is very helpful for you to manage and monitor all of the USB-Over-IP Servers on the network.

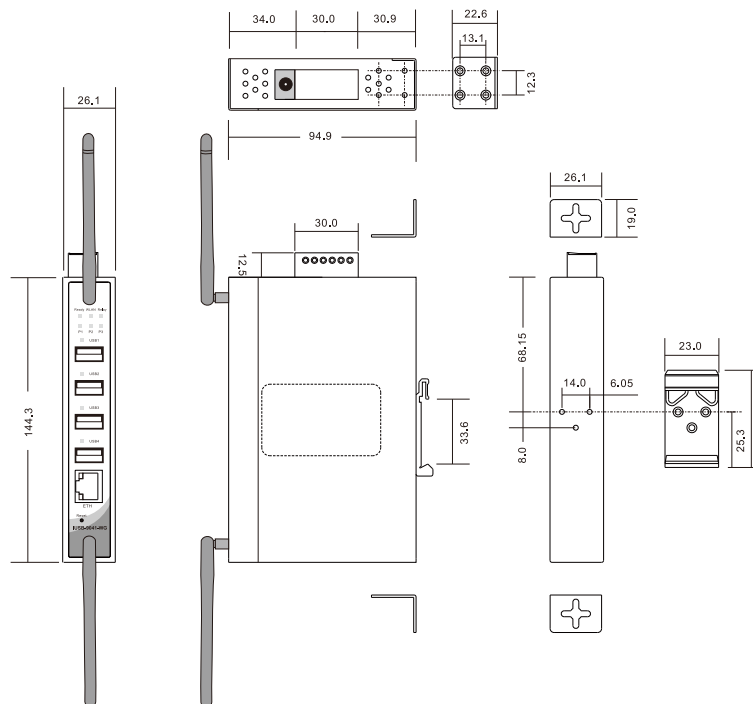


USB remote connectivity



USB-Tool : Monitoring and Configuration interface

Dimensions



(Unit=mm)

## Specifications

ORing USB-Over-IP Server	IUSB-9041-WG
<b>Physical Ports</b>	
10/100Base-T(X) Port in RJ-45 Auto MDI/MDIX	1
<b>USB Ports</b>	
Number of Ports	4
Connector	USB host 2.0 x 4 , Type A
Operation Mode	1.0 / 1.1 / 2.0 support
<b>WLAN Feature</b>	
Operating Mode	Client mode
Antenna and Connector	2dBi antenna on reversed SMA connector
Radio Frequency Type	DSSS, OFDM
Modulation	IEEE802.11b : CCK, DQPSK, DBPSK IEEE802.11g : OFDM with BPSK, QPSK, 16QAM, 64QAM
Frequency Band	America/FCC : 2.412~2.462 GHz (11 channels) Europe CE/ETSI : 2.412~2.472 GHz (13 channels)
Transmission Rate	IEEE802.11b : 1/ 2/ 5.5/ 11 Mbps IEEE802.11g : 6/ 9/ 12/ 18/ 24/ 36/ 48/ 54 Mbps
Transmit Power	IEEE802.11b/g : 18dBm
Receiver Sensitivity	-81dBm @ 11Mbps, PER< 8%; -64dBm @ 54Mbps, PER< 10%
Encryption Security	WEP : (64-bit ,128-bit key supported) WPA /WPA2 : IEEE802.11i(WEP and AES encryption) WPA-PSK (256-bit key pre-shared key supported) TKIP encryption
<b>Networking</b>	
OS support	Windows 2000, XP, 2003, Vista(32 /64 bit),Windows 7(32 /64 bit)
TCP/IP	IP, ICMP, ARP, RARP, TCP, UDP, HTTP
Browser	IE 6.0 or above
<b>LED Indicators</b>	
Power Indicator	Green LED x 3 for power
Ready Indicator	Green for ready
WLAN Indicator	Green : WLAN Link/Act.
Relay Indicator	Amber for fault relay
10/100Base-T(X) RJ-45 Port Indicator	Green for port Link/Act. Amber for data transmitted.
USB Indicator	Green for USB port activated
<b>Fault Contact</b>	
Relay	Relay output to carry capacity of 1A at 24VDC
<b>Power</b>	
Input Power	Triple DC inputs. 12 ~ 48 VDC on 6-pin terminal block and power jack
Power Consumption (USB devices are not included)	6W

Physical Characteristics	
Enclosure	IP-30
Dimensions (W x D x H)	26.1(W) x 94.9(D) x 144.3(H) mm (1.03x3.74x5.68 inch.)
Weight (g)	398g
Environmental	
Storage Temperature	-40 to 85°C (-40 to 185°F)
Operating Temperature	-10 to 55°C (14 to 131°F)
Operating Humidity	5% to 95% Non-condensing
Regulatory Approvals	
EMI	FCC Part 15, CISPR (EN55022) class A
EMS	EN61000-4-2 (ESD), EN61000-4-3 (RS), EN61000-4-4 (EFT), EN61000-4-5 (Surge), EN61000-4-6 (CS), EN61000-4-8, EN61000-4-11
Shock	IEC60068-2-27
Free Fall	IEC60068-2-32
Vibration	IEC60068-2-6
Safety	EN60950-1
Warranty	3 years

### Ordering Information

IUSB-9 **AA** **B** - **CC**

Code Definition	USB Port Number	10/100Base-T(X) Port Number	Additional Options
<b>Option</b>	- <b>4</b> : 4 port	- <b>1</b> : 1 port	- <b>WG</b> : IEEE802.11 b/g mode

Available Model	Model Name	Description
	IUSB-9041-WG	Industrial USB-over-IP IEEE 802.11 b/g wireless server with 4xUSB 2.0 host and 1x10/100Base-T(X)

#### Packing List

- IUSB-9041-WG
- DIN-Rail Kit
- Wall-mount Kit
- Antenna
- ORing Tool CD
- Quick Installation Guide

#### Optional Accessories (Can be purchased separately)

- DR-45 series, 45W DIN-Rail power supply
- DR-75 series, 75W DIN-Rail power supply
- DR-120 series, 120W DIN-Rail power supply
- PAA-121000, 12VDC/1000mA 12W Power Adapter, US plug
- PAE-121000, 12VDC/1000mA 12W Power Adapter, EU plug
- RF-Antenna Base
- RF-Surge Protector
- RF-Cable