
Chapter 32 FTP Server Application.....	2
32.1 Login FTP Server	2
32.2 Backup History Data and Update Recipe Data.....	4

Chapter 32 FTP Server Application

In addition to backup history data from HMI to PC by SD card, USB memory stick or EasyPrinter, FTP Server can also be applied to do this. After downloading project to HMI, FTP Server can be used to backup history data and recipe data, and also to update recipe data. The files in FTP Server can't be deleted.

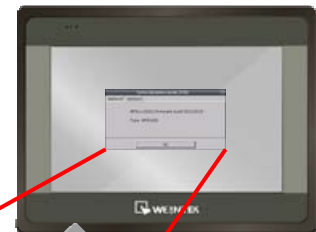
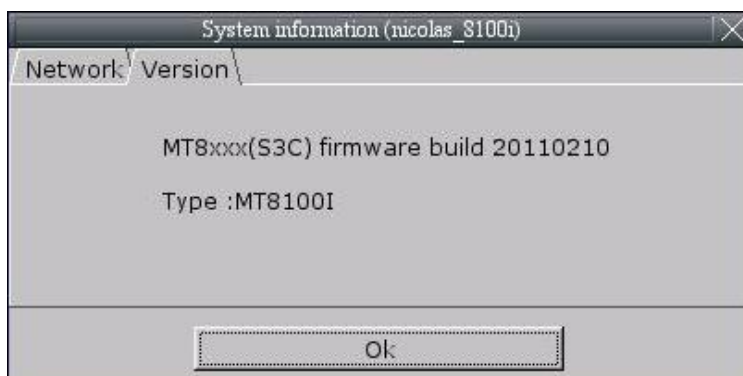


32.1 Login FTP Server

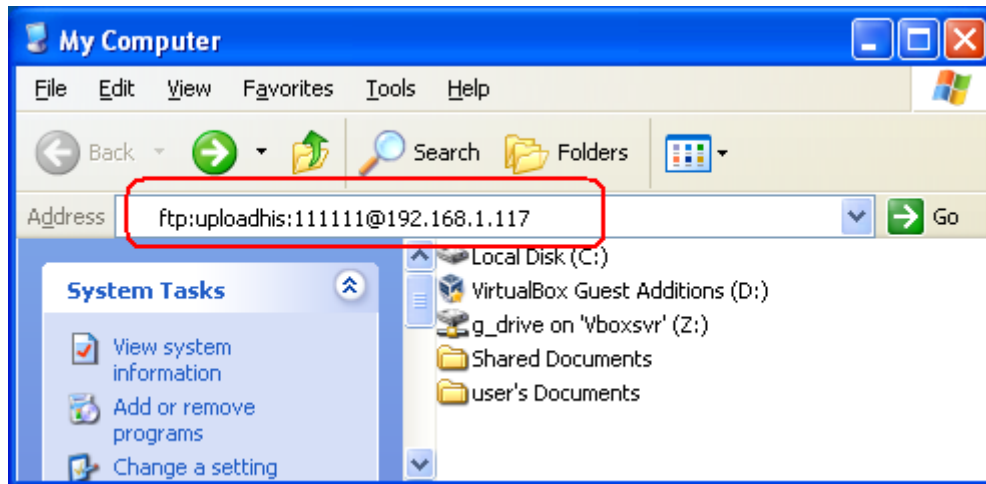
Step 1: Before login FTP Server, please check the OS Image version:

MT6000/8000 i Series: OS Image 20100818 or later

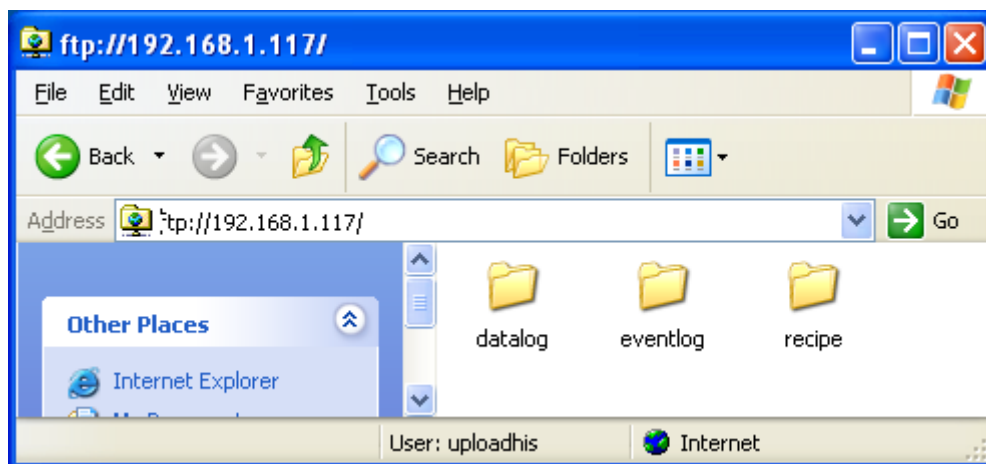
MT8000 X Series: OS Image 20100906 or later



Step 2. Enter HMI IP: <ftp://192.168.1.117/> (example), login user name: uploadhis, and the HMI history upload password (if not changed, the default is 111111). Or, to directly enter <ftp://uploadhis:111111@192.168.1.117/>



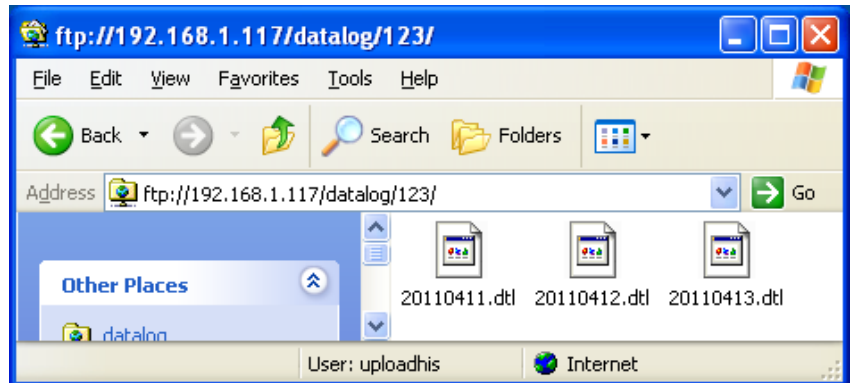
Step 3. After entering IP, <ftp://192.168.1.117/> is shown, and the “datalog”, “eventlog”, and “recipe” folders can be seen.



32.2 Backup History Data and Update Recipe Data

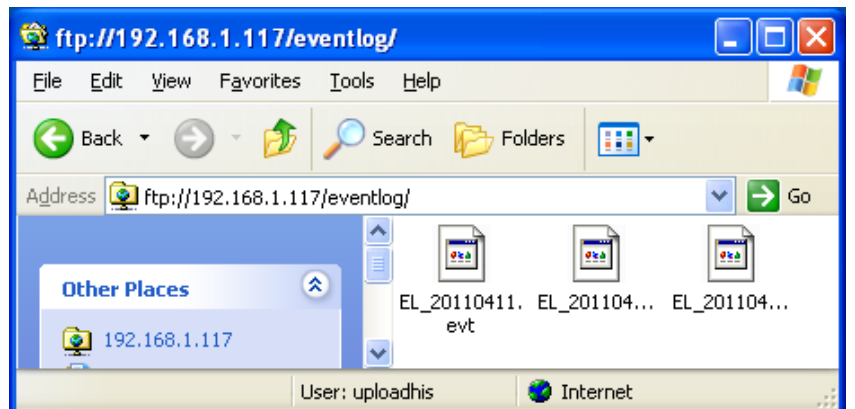
◆ To backup “Data Sampling” records

1. Click “datalog” folder to check the file names set by EasyBuilder Pro.
2. Click on file names to check content.
3. Copy and paste to save files on PC.



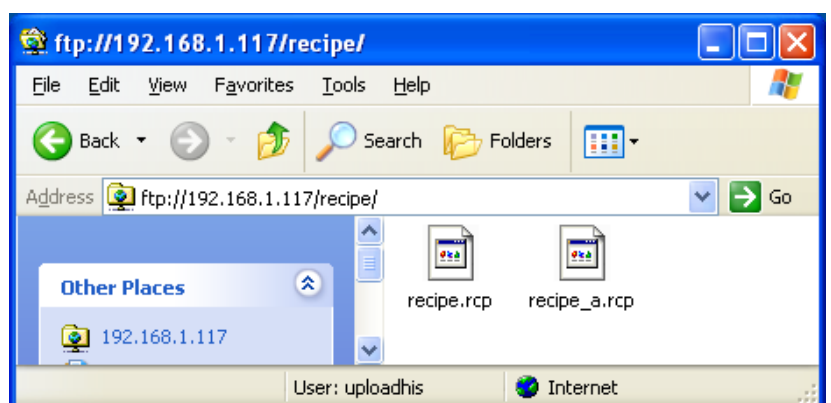
◆ To backup “Event (Alarm) Log” records

1. Click “eventlog” folder to check the files.
2. Copy and paste to save files on PC.



◆ To backup and update “Recipe” records

1. The way to backup is same as above.
2. To update “recipe” data on HMI, overwrite “recipe.rcp” with new data and restart HMI in one minute.





■ Since recipe data is automatically saved once every minute, after updating “recipe.rcp” or “recipe_a.rcp”, HMI must be restarted in one minute otherwise the new updated recipe data will be overwritten by the former data. [LB-9047] and [LB-9048] can also be used to restart HMI. Set [LB-9048] to ON and then set [LB-9047] to ON to successfully restart HMI.

System Registers:

[LB-9047] reboot HMI (set ON when LB9048 is ON)

[LB-9048] reboot-HMI protection
