

netGSM description

The netGSM function is designed for sharing one GSM modem connected to one unit with other devices on the same network. This means that more Poseidon units can send Alarm SMS using one GSM modem thus reducing network topology and costs.

The netGSM consists of a client and a server part. The server part is the Poseidon unit with the GSM modem. The clients are other units or software.

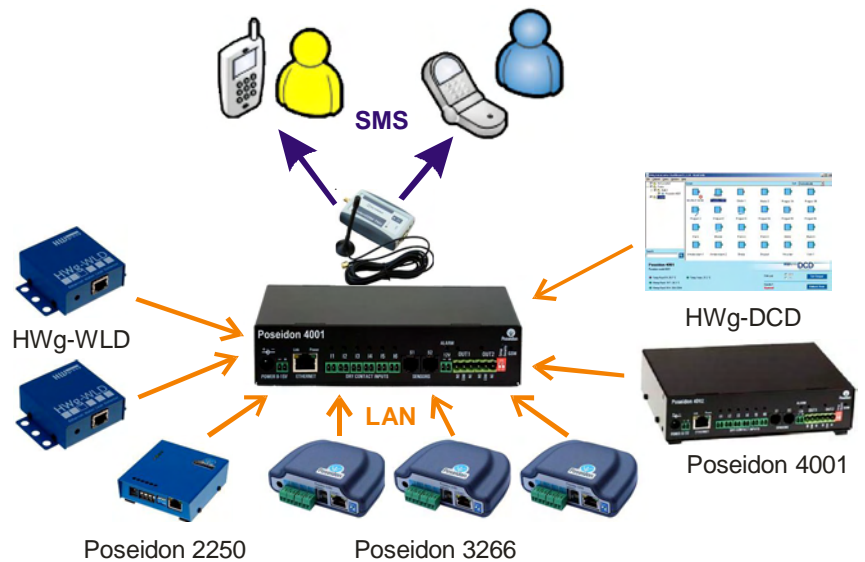
Devices currently supporting the netGSM (as of 1.1.2010)

Server (GSM modem needed)

- Poseidon 2250
- Poseidon 4001
- Poseidon 4002

Client (no modem needed, SMS are sent through other unit)

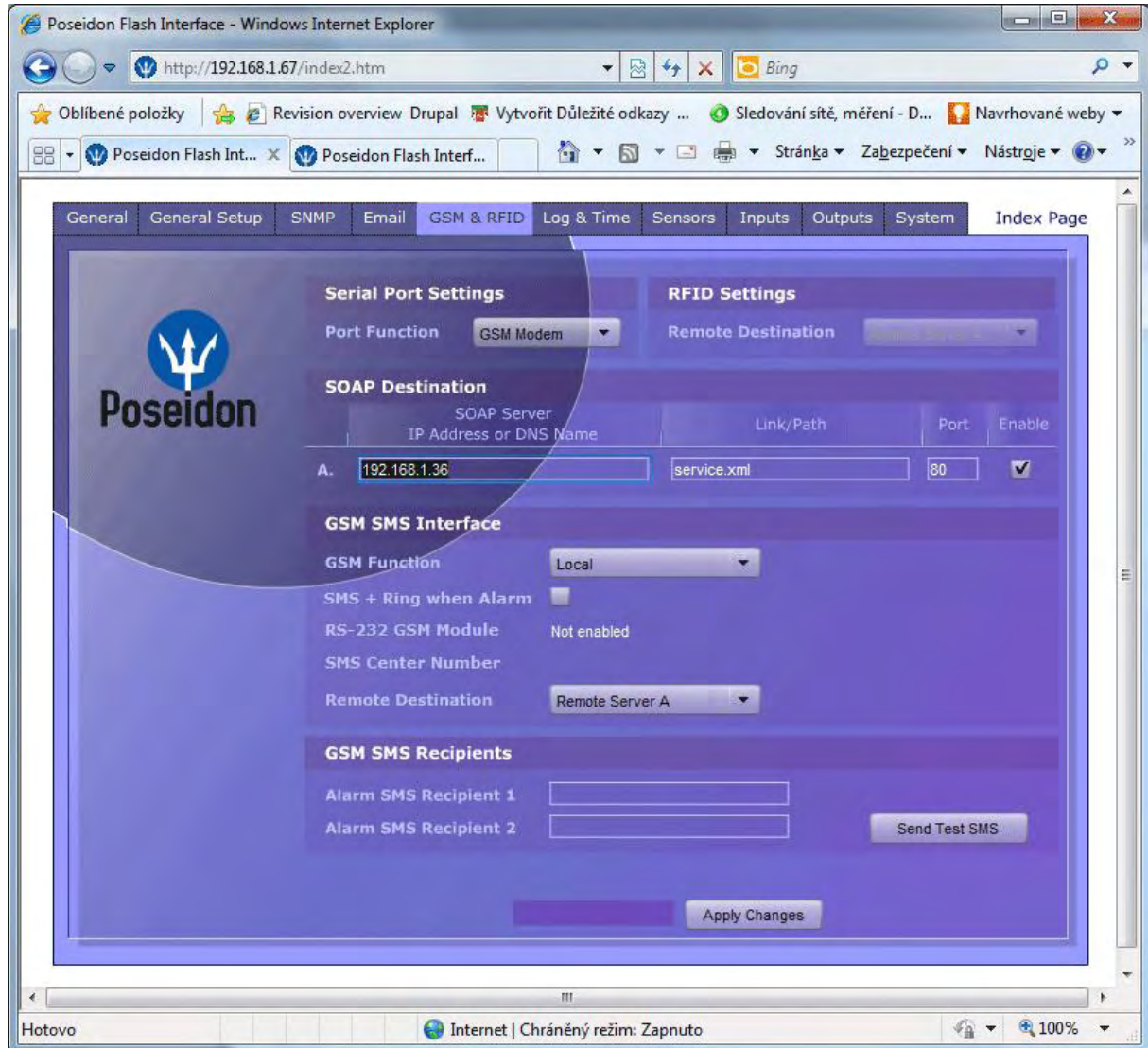
- Poseidon 2250
- Poseidon 4001
- Poseidon 4002
- Poseidon 3266
- HWg-WLD (testing)
- HWg-PWR (testing)
- HWg-DCD
- Nagios Plugin (testing)



netGSM supported functions

- SMS Send
- SMS Receive (only for HWg-DCD)
- Ring a remote phone
- Accept call (only for HWg-DCD)

Setup parameters description



Serial Port Settings

Port Function sets the serial port functionality (available only on models with a serial port and netGSM server support). Options:

- *Disabled* – The serial port is disabled – only with no modem connected and the device working as a client
- *GSM modem* – the GSM modem is connected and the Poseidon unit works as a server for the netGSM
- *RFID* – only with a connected RFID reader (only for HWG-DCD)

RFID Settings

This is reserved for future use. Allows to set the RFID card numbers destination

SOAP Destination

Allows to set the IP address, HTTP port and a path to the service. This routes the SMS send requests, RFID control etc. **The Poseidon units always use service.xml !**

GSM SMS interface

This setups the SMS parameters

- **GSM Function** – Allows to set if the SMS are sent through a local modem (available only if the serial port is in the GSM modem mode)
- **SMS+Ring when Alarm** – allows to ring a phone number when sending an SMS
- **RS-232 GSM module** – GSM modem status
 - *Not Enabled* – not active. This is shown when the RS-232 port settings are changed, but not saved
 - *Not Found* – the Poseidon is set to use the local modem, but that cannot be found
 - *Waiting for modem* – searching for the device
 - *Initializing* – the modem is initializing
 - *Ready* – the device is prepared for use
- **SMS center Number** – for information, the SMS center number read from the SIM card. If this is not available, SMS cannot be sent
- **Remote Destination** – Reserved for future use. This lets the user set the destination for SMS sending or ring.

GSM SMS recipient

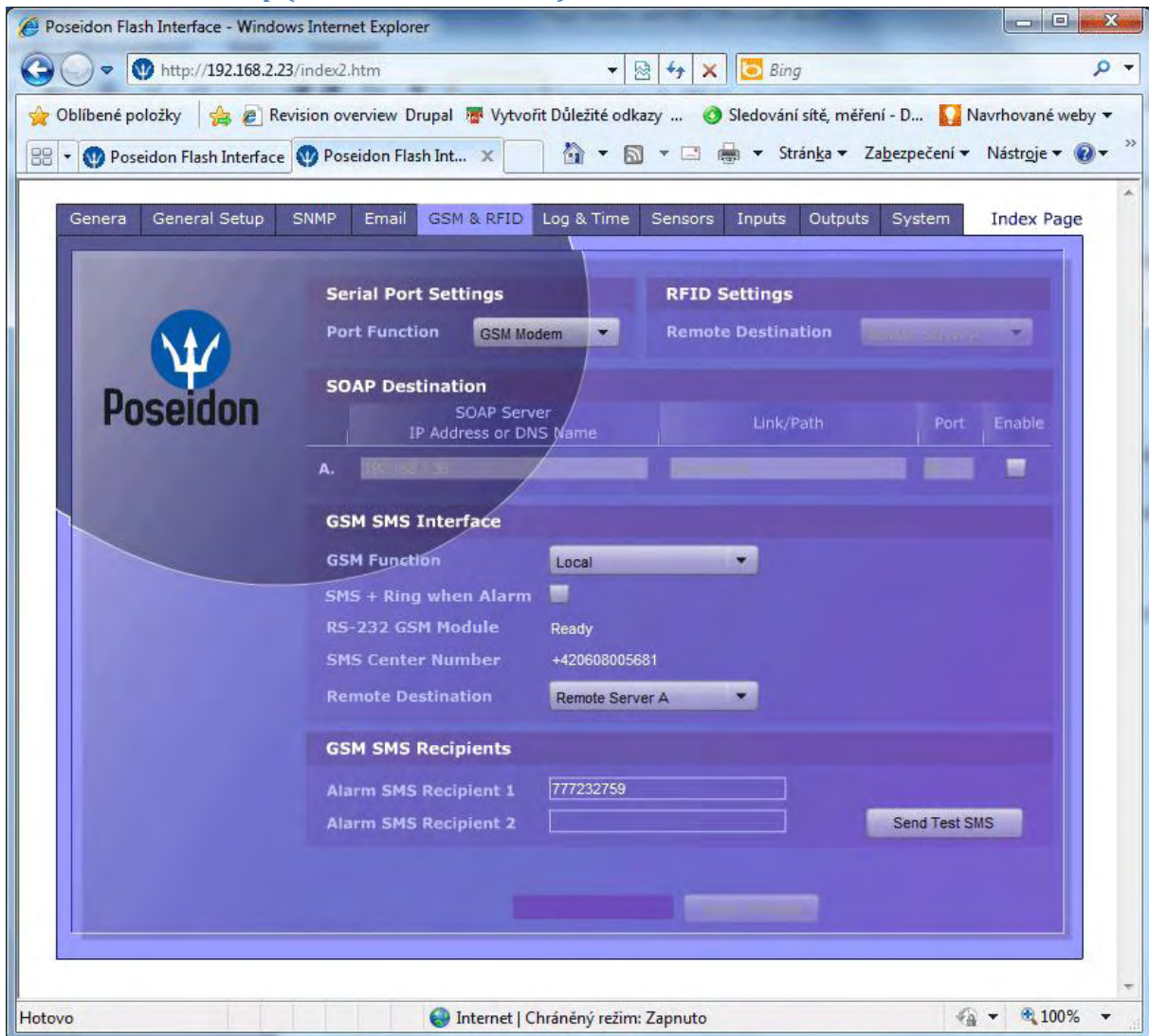
This allows the user to set the SMS destination numbers. It is independent on the operation mode (local / remote modem)

Setup example

Two Poseidon units were used:

- 192.168.2.23 Poseidon 4001 with a GSM modem connected
- 192.168.1.67 Poseidon 3266 with no modem, using the Poseidon 4001 to send SMS

Poseidonu 4001 setup (with the GSM modem)

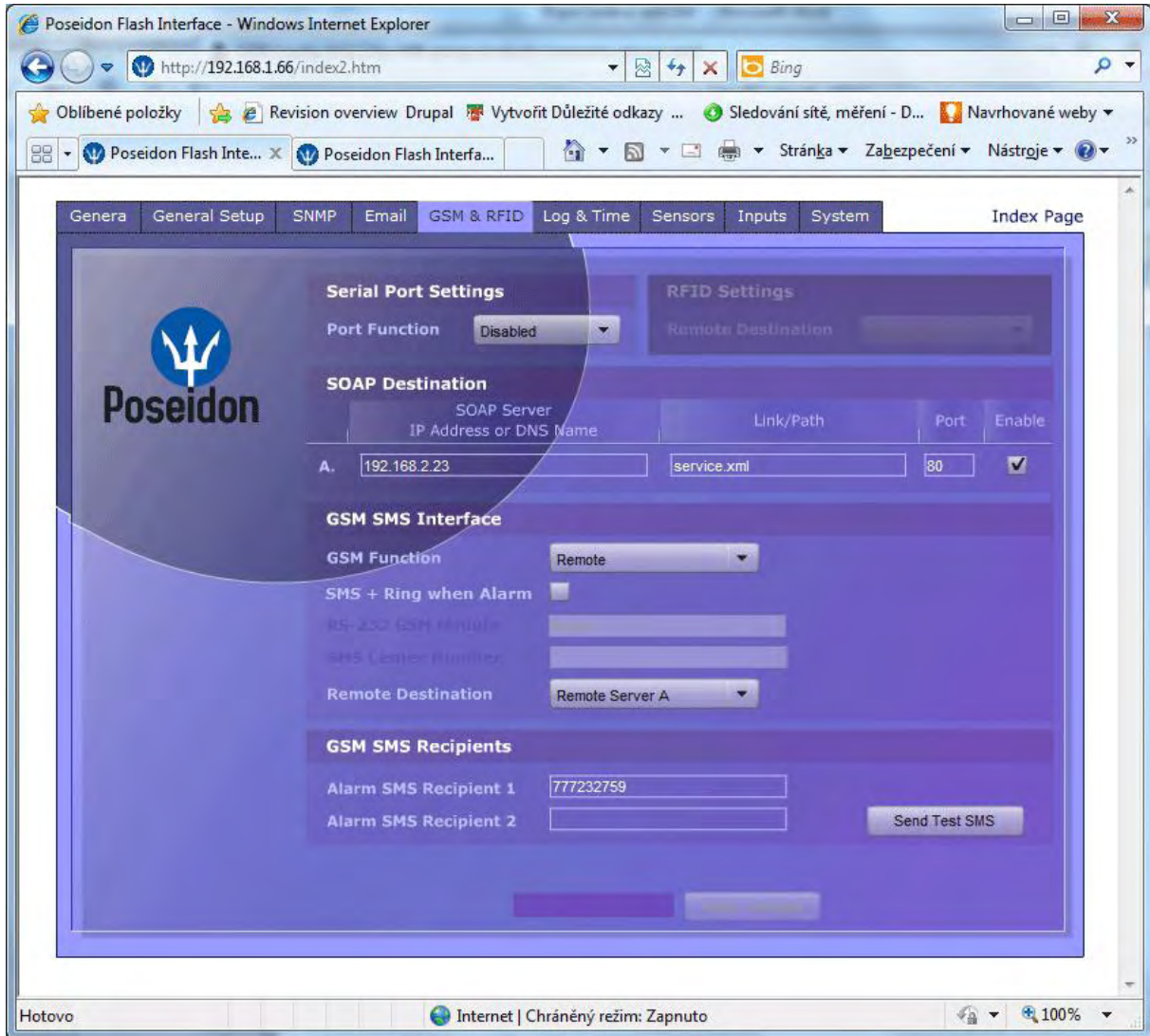


In the default status you first need to enable the GSM modem in the **Serial port Settings** and then set the **GSM Function** to *Local*. Deactivating the **SOAP destination** is optional, as well as the **SMS+ Ring when Alarm** function.

XML setup example

```
= <SerialPort>  
  <E>1</E>  
  </SerialPort>  
=  
=<SMS>  
  <Function>1</Function>  
  <Ring>0</Ring>  
  <Dest>1</Dest>  
  <Module>Ready</Module>  
  <CenterNmr>+420608005681</CenterNmr>  
  <Recp1>777232759</Recp1>  
  <Recp2 />  
  <State>13</State>  
  <Message>OK</Message>  
  </SMS>  
=  
=<RFID>  
  <Dest>1</Dest>  
  </RFID>  
=  
=<SOAP>  
=<Entry>  
  <Idx>1</Idx>  
  <E>0</E>  
  <Server>192.168.1.36</Server>  
  <Port>80</Port>  
  <Route>service.xml</Route>  
  </Entry>  
  </SOAP>
```


Poseidon 3266 setup



In the default setting you just need to set the remote IP of the Poseidon and the SMS phone numbers. The **SMS+ Ring when Alarm** is optional.

XML setup example

```
= <SerialPort>  
  <E>0</E>  
  </SerialPort>  
=  
=<SMS>  
  <Function>0</Function>  
  <Ring>0</Ring>  
  <Dest>1</Dest>  
  <Module>Ready</Module>  
  <CenterNmr />  
  <Recp1>777232759</Recp1>  
  <Recp2 />  
  <State>13</State>  
  <Message>OK</Message>  
  </SMS>  
=  
=<SOAP>  
=<Entry>  
=<Idx>1</Idx>  
  <E>1</E>  
  <Server>192.168.2.23</Server>  
  <Port>80</Port>  
  <Route>service.xml</Route>  
  </Entry>  
  </SOAP>
```