

# Schneider M340/M580 Series (Symbolic Addressing) (Ethernet)

Supported Series: Schneider M340/M580 series (Support firmware v2.70 or later)

Website: <http://www.schleicher-electronic.com>

## HMI Settings:

Parameters	Recommended	Options	Notes
<b>PLC type</b>	Schneider M340/M580 Series (Symbolic Addressing) (Ethernet)		
<b>PLC I/F</b>	Ethernet		
<b>Port no.</b>	502		

## Support Device Type:

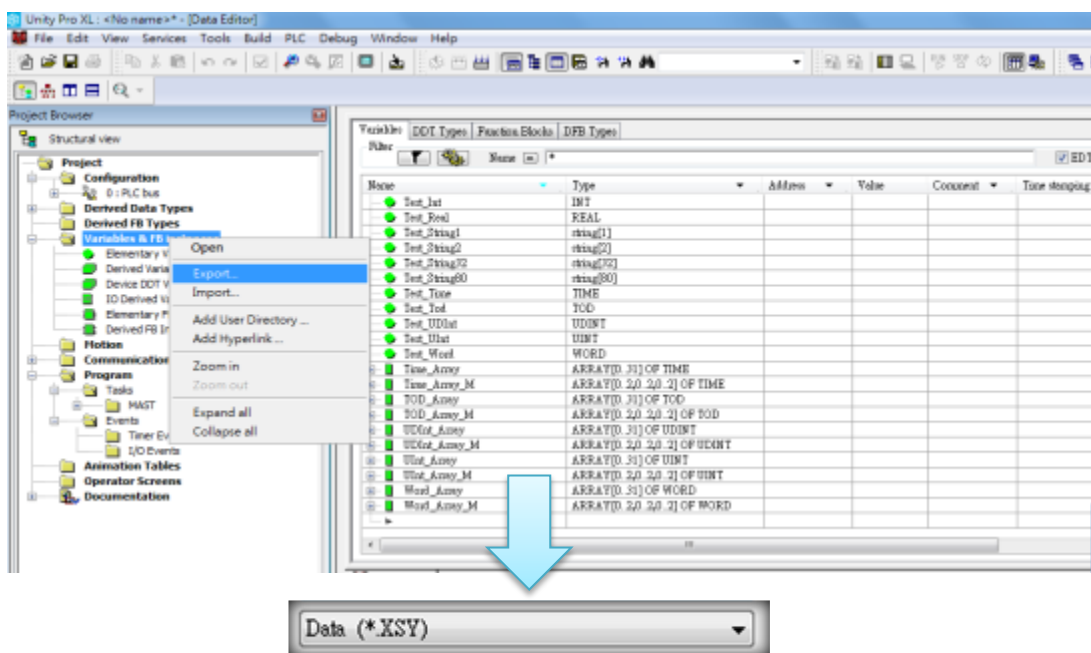
Data Type	EasyBuilder data format	Memo
BOOL	bit	
EBOOL	bit	
BYTE	16-bit BCD, Hex, Binary, Unsigned	8-bit
DATE	32-bit BCD, Hex, Binary, Unsigned	32-bit
DINT	32-bit BCD, Hex, Binary, Signed	32-bit
DWORD	32-bit BCD, Hex, Binary, Unsigned	32-bit
INT	16-bit BCD, Hex, Binary, Signed	16-bit
REAL	32-bit Float	32-bit
STRING	ASCII input and ASCII display	
TIME	32-bit BCD, Hex, Binary, Unsigned	32-bit
TOD	32-bit BCD, Hex, Binary, Unsigned	32-bit
UDINT	32-bit BCD, Hex, Binary, Unsigned	32-bit
UINT	16-bit BCD, Hex, Binary, Unsigned	16-bit
WORD	16-bit BCD, Hex, Binary, Unsigned	16-bit

## Support Tables:

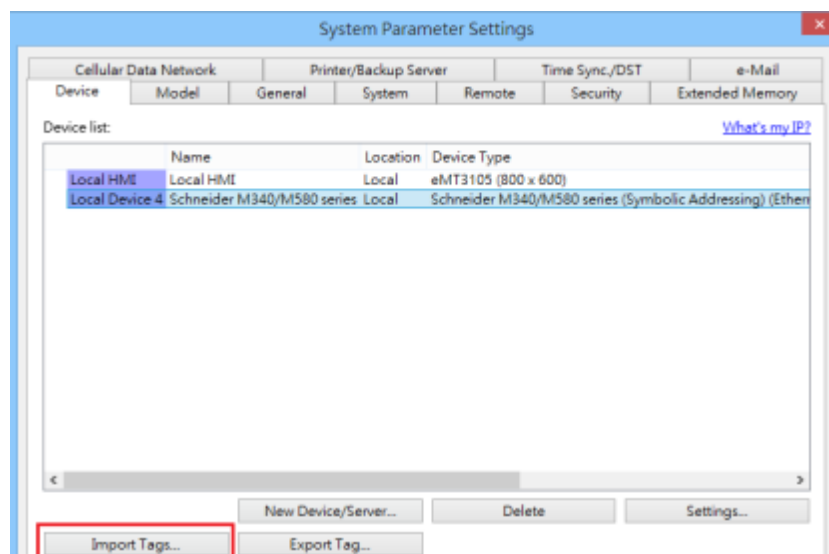
- Variables table
- Derived data types table
- Structure
- Array (Supported one dimension)
- Array data structure

## How to Import Tags:

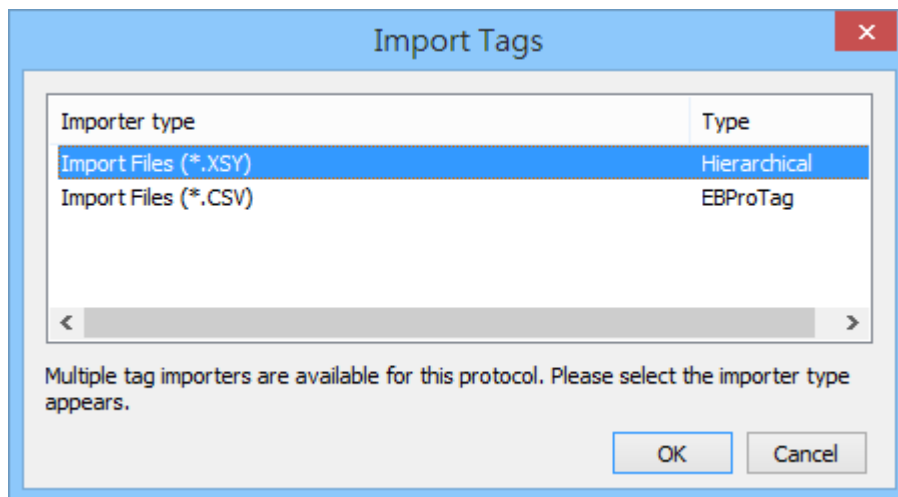
1. Export file (\*.XSY) from PLC Software.



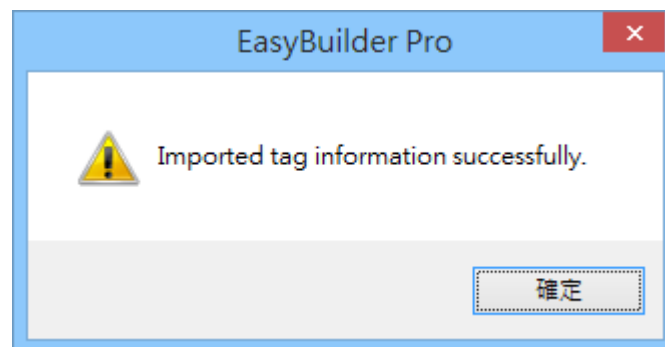
2. Import tags in the driver settings of EasyBuilder Pro.



3. Select the file format to import.



4. Import results dialog.



## Wiring Diagram:

**Ethernet cable:**

